



View from Gough Street

Dear Neighbour,

Welcome to the summer edition of our community newsletter for Postmark.

Phase 1 (block A) works well underway

We have made good progress and have achieved all the goals for the quarter that we set out in our last newsletter:

GROUND FLOOR SLAB COMPLETE



Having successfully removed the supporting props to the basement, we commenced the concrete pour. Both the ground floor slab and ramp to the basement car park are now complete.

UTILITY CONNECTIONS PROGRESSING



Utility installation continues apace. This includes gas, water and HV cabling along Phoenix Place and Mount Pleasant.

UPPER LEVEL FLOOR SLABS UNDERWAY



The vertical lift cores are progressing well on cores A5 and A6 (which will be the first units to complete), and we have been able to start the concrete pour on the upper levels. We are currently at level 5 and will continue to progress up the building. Lift construction continues on the other cores.

FAÇADE WORKS UNDERWAY



Scaffold has begun to be erected to cores A5 and A6 to facilitate brickwork and windows installation.

Blockwork has started in the basement, energy centre and podium elevation.

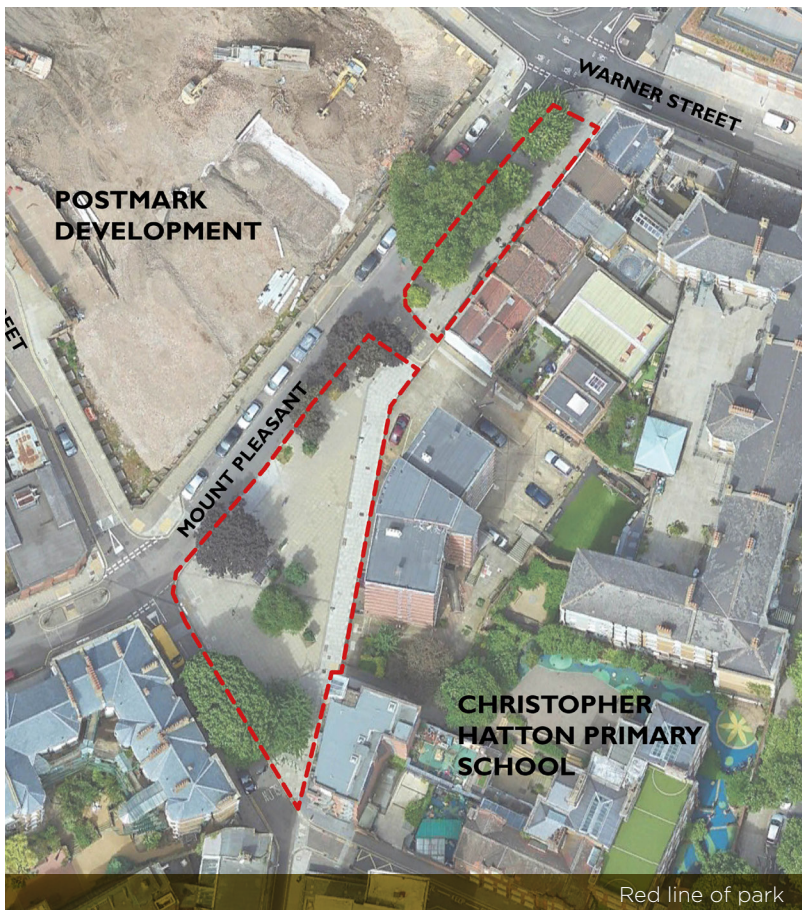
Pocket Park

As one of the community benefits to be delivered as part of the Postmark development, we are committed to funding a pocket park on land at the junction of Mount Pleasant and Gough Street as outlined in the map below. The park would then be built and maintained by the London Borough of Camden.

To better understand the local community's vision for this site, we held two events in July and asked those who attended to tell us what facilities they would like to see.

- At a workshop, Year 6 students at Christopher Hatton School used Minecraft to build a 'virtual' park, in which they included everything that is important to them.
- At an event on site, local residents told us what they like – and don't like – about the current site and what they would like to see provided as part of a new park.

We are now reviewing all the feedback we received which we will then share with Camden Council and other local stakeholders before we progress any designs. You can find out more and tell us what you think on our project website: www.twmountpleasant.co.uk



PHASE 2 CONSTRUCTION MANAGEMENT PLAN (CMP) CONSULTATION

We will be consulting on the CMP for Phase 2 this autumn. Please look out for your invitation to our information event which we will issue in good time; full details of the event and of the proposed CMP will also be available on our website nearer the time.

The CMP sets out our ways of working and we will be bound by its terms once it has been agreed with the London Borough of Camden.

CONTACT TAYLOR WIMPEY CENTRAL LONDON

Phone: 0800 169 6507

Email: mountpleasant@newgatecomms.com

Website: www.twmountpleasant.co.uk